

DrayTek

2013



Your reliable networking solutions partner

Databook

About **DrayTek**

DrayTek, state-of-the-art firmware designer and quality hardware producer is the reliable supplier of novel networking & telecommunications for SOHO and SMB. At present, DrayTek's solutions, ranging from enterprise-level firewalls, mission-critical bandwidth management and comprehensive VPN facilities, triple play routers, to prospective IP PBX solutions, can meet the market trend and go above and beyond customer's expectations.

Customer Services enhanced by MyVigor Portal

Serving activation of followings

- DrayTek Anti Virus license
- DrayTek VigorACS SI license
- Kaspersky Anti Virus license
- Commtouch Anti Spam license
- Commtouch GlobalView Web Content Filter
- BPJM Web Content Filter (hosted by DrayTek GmbH)

Membership/Customer Survey

IPv6 Commitment



Customer Care

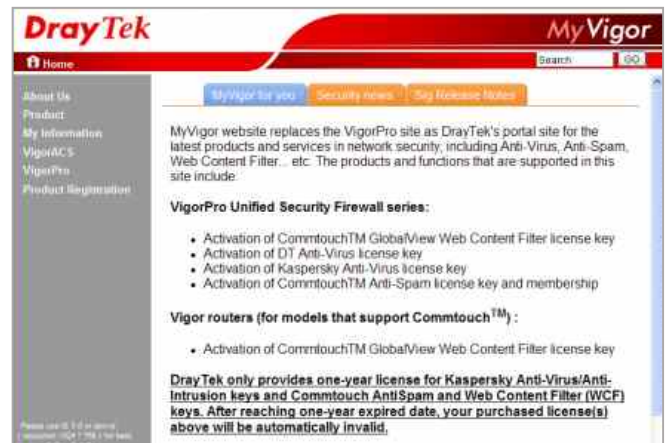


Registration

Please register products at MyVigor portal myvigor.draytek.com

Membership Registration entitles you to upgrade firmware for your registered product and receive news release about upcoming products and services!

MyVigor



Broadband Connectivity changes your life

How many applications can be available for the Households?
Multi-media streaming, High-Definition IP TV, Parent Control.

What does the Home Office expect? **Speed !!!**

Protection from Internet threats. Reduce network overhead.
Everything encrypted for remote access and VoIP.

What do IT Pros and SMB resellers must deliver to SMB?

CSM, URL Filtering, Application Blocking

Enhance Productivity.

Multi-protocol VPN, DoS Prevention, SPI Firewall

Secure Remote Access. Strengthen Security.

IEEE 802.11 Wi-Fi, Multiple SSID

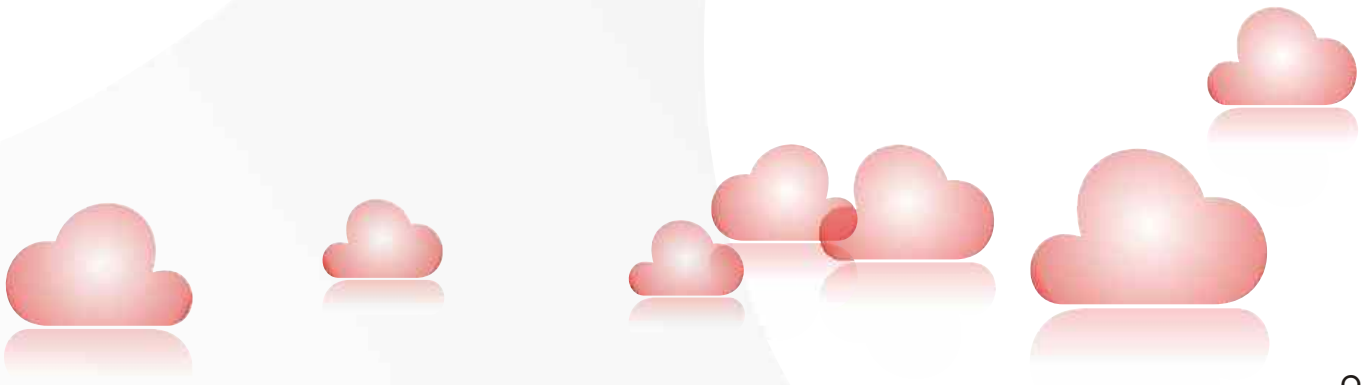
Reliable and secure wireless access to the network.

Bandwidth Management and Quality of Service (QoS)

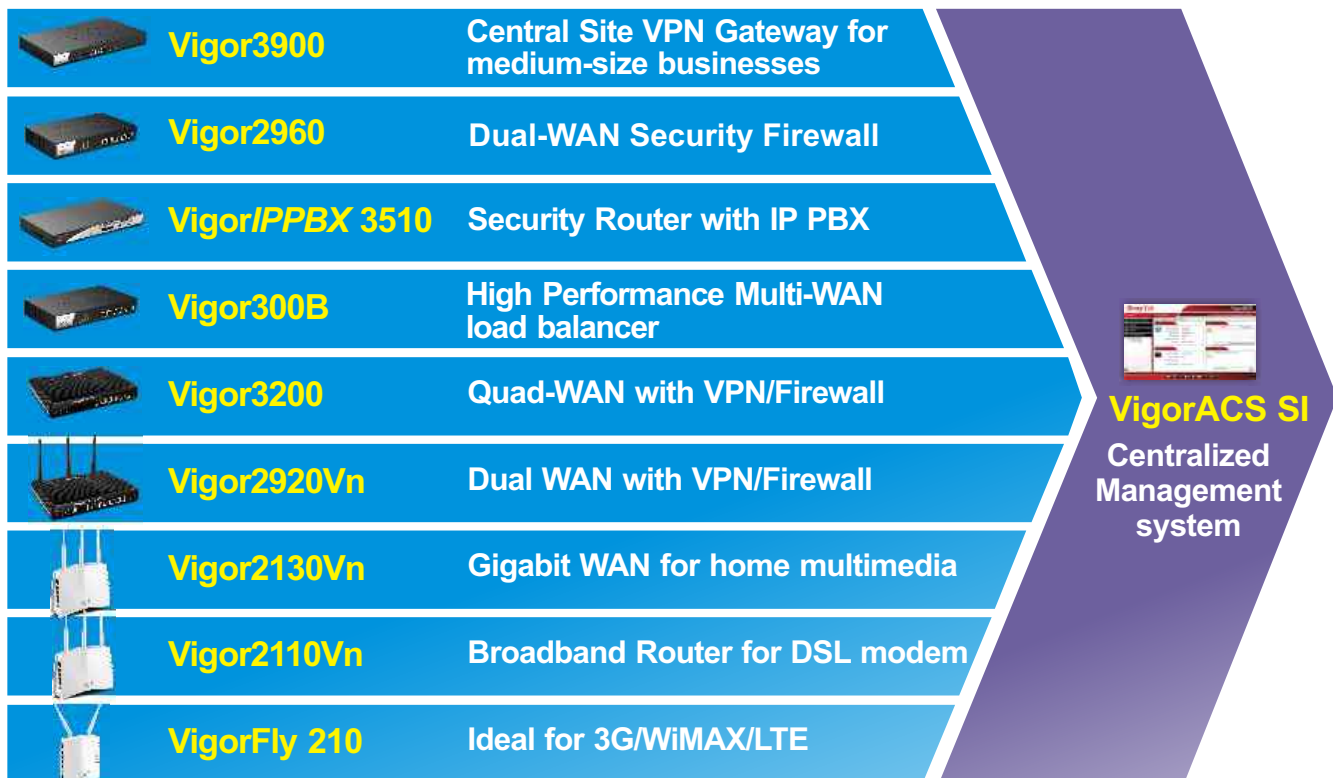
Assure mission-critical data be delivered with high priority.
Assure the VoIP packet be crystal-clear.

Load-balancing and Failover

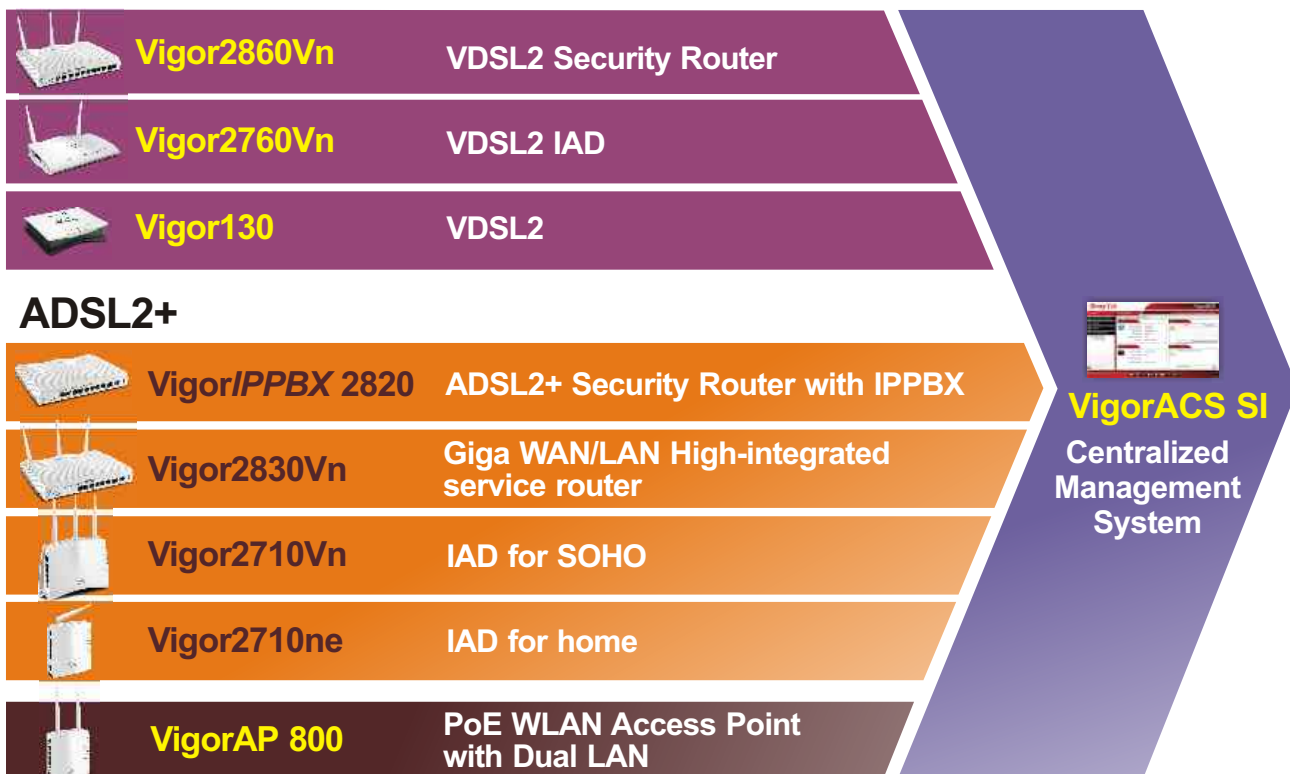
Maintain Business Continuity of E-mail, VoIP, and other cloud services



Broadband



VDSL2



Index

About DrayTek	1-3
DrayTek Whole Series	5-6
VigorACS SI Central Management	7-9
Smart Monitor Network Traffic Analyzer	10
Mid-size Business Solutions	11-14
SOHO/Small Business Solutions	15-18
Get Ready for IPv6 Era	19-22
IP PBX Solutions	23
Fiber Solutions	24
Vigor Family	25-42



Mid-size Solutions

Vigor2960
Dual WAN
(NAT Throughput
up to 1000 Mbps)



Fast Broadband

Vigor3900
Multi WAN
(NAT Throughput
up to 1000 Mbps)



Fast Broadband

Fiber Solutions

Vigor2960F
SFP



FTTx (100/1000Mbps)

Vigor2920F
SFP



FTTx (100Mbps)

Vigor1000
SC



FTTx (10/100/1000Mbps)

Vigor2130F
SFP



FTTx (100/1000Mbps)

Vigor2110F
SFP



FTTx (10/100Mbps)

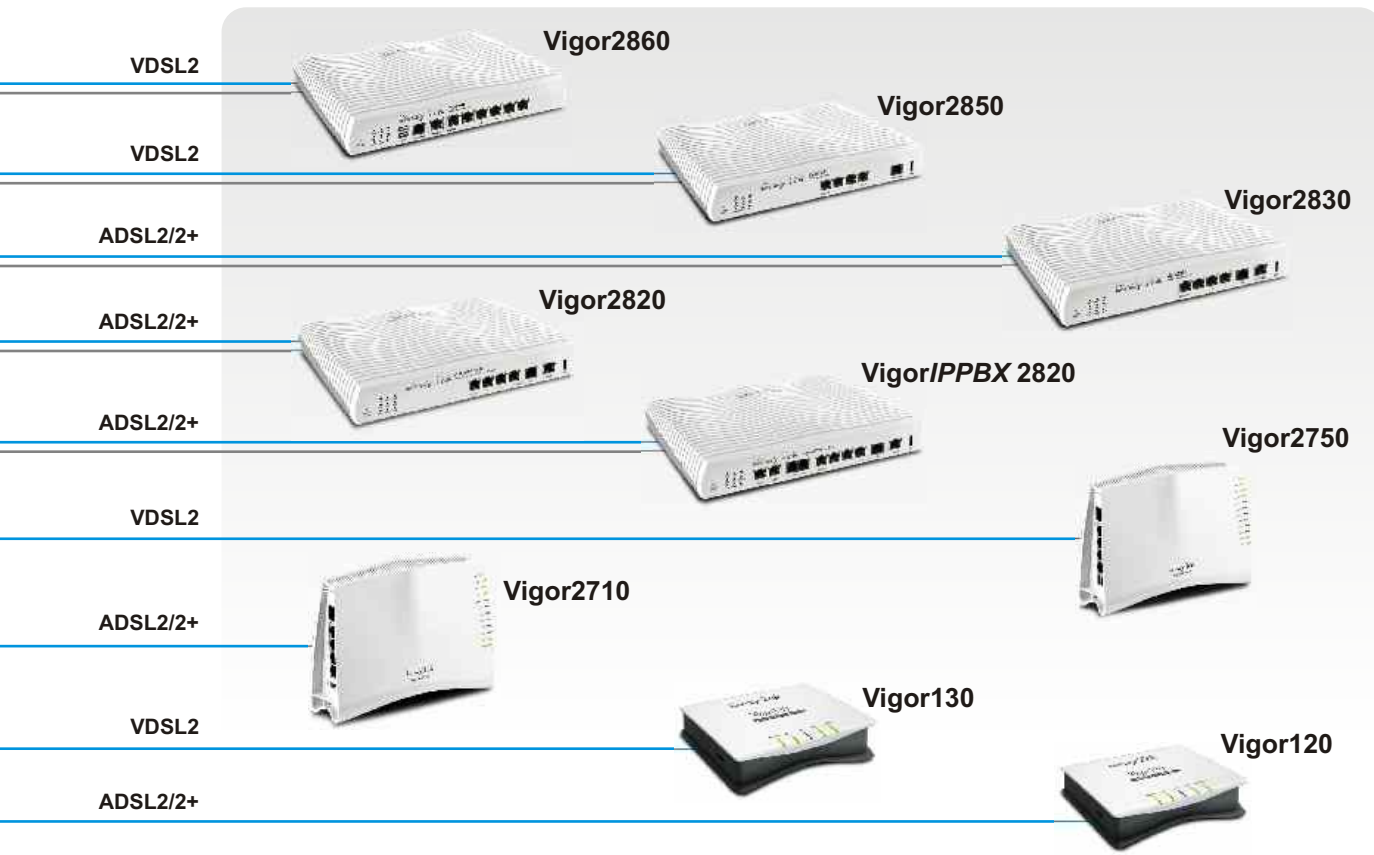
VigorFly 200/210F
SFP



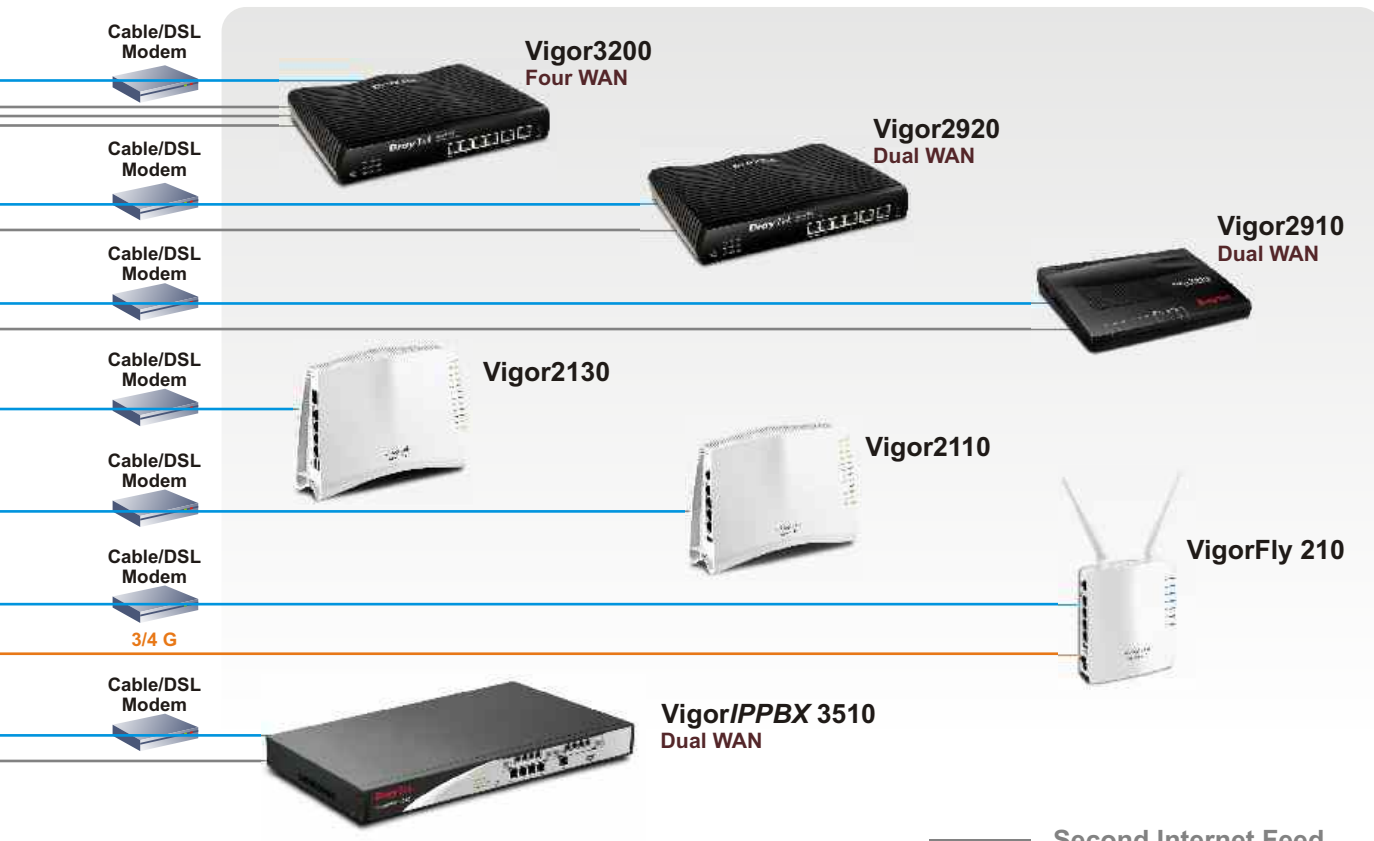
FTTx (10/100Mbps)

Internet

**Small Office
xDSL**



Broadband



VigorACS SI

Centralized Management System

TR-069 Management System for Vigor series routers



DrayTek VigorACS
Your reliable networking solutions partner

Network: Wholenetwork

Networks And Devices

Managed networks and devices
 Total number of networks:25
 Alarm networks:0
 Total number of devices:3
 Number of alarmed devices:3

Unknown Devices

IP Address	Device Name	Device Type	Action
188.146...	V5510 MEK	VigorPre 5510	[+]
37.52.3...	DrayTek_005...	Vigor2930VB	[+]
140.137...	DrayTek_005...	Vigor2950 Same	[+]

Latest Alarms

Level	Time	Device Name	Network	Description	Action
Critical	Sun Jul 17 08:04:21	V5510 MEK	Wholenetwork	DeviceLossConnection	[x] [i]
Critical	Sat May 28 00:40:15	DrayTek_00507F_V...	Wholenetwork	DeviceLossConnection	[x] [i]
Critical	Sat May 28 00:40:15	DrayTek_00507F_V...	Wholenetwork	DeviceLossConnection	[x] [i]

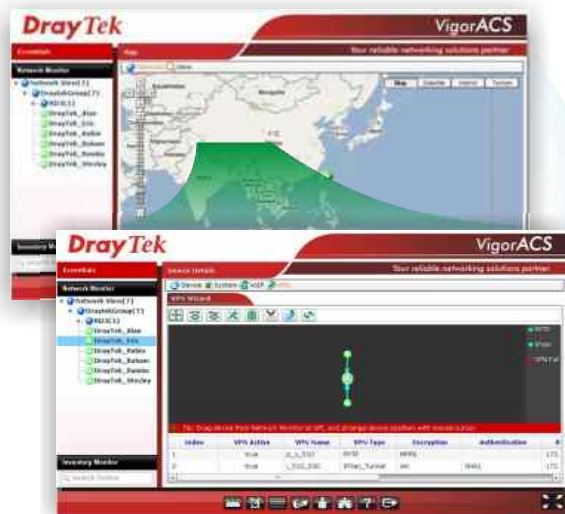
Navigation Bar: Device, Alarm, Log, Provision, Admin, User, Help, Logout

Multi-site Central Management

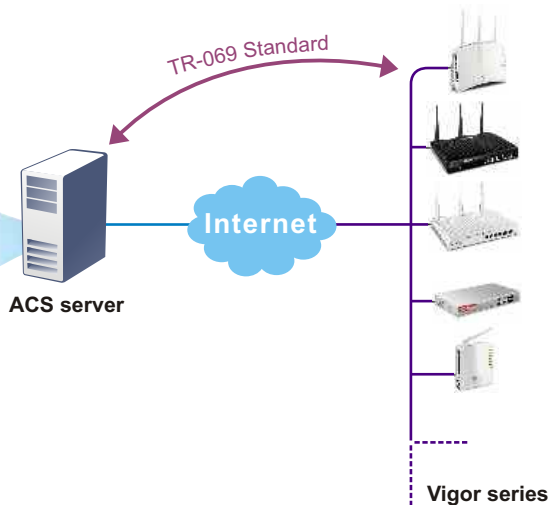


- Centralized configuration and monitoring of network devices
- TR-069 based Auto Configuration Server
- Automated Drag & Drop feature for VPN connections
- Locations shown on Google Map
- Alarm Records

Google map for device management in different location



VPN Drag & Drop



Official package

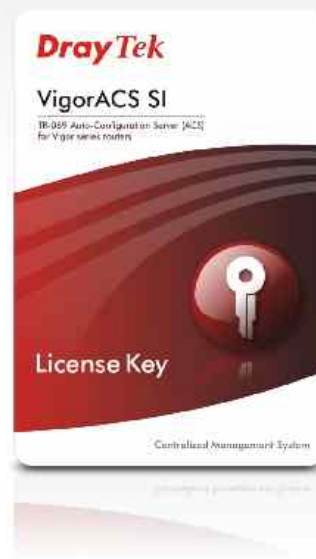


What's included in the package

- Quick Start Guide
- CD Manual /Software for installation on Windows (2000/XP/Vista); Linux/Unix



- VigorACS SI License Key



activation on **MyVigor** portal

Network Traffic Analyzer

DrayTek
98 Users Logged 1 Admin Online Admin
Smart Monitor

System User Setting Service Analysis User Analysis Report
Manual Refresh

Quick Start Guide

- > Create your Admin Account
- > Modify general Setting
- > Create Group/Department to manager users
- > View service records and traffic in Service Analysis
- > View each user's records and traffic in User Analysis
- > View statistics and analysis information in Report

Tricks & Tips

- > Admin Online
- > Event Log
- > Resources
- > Service Top 10
- > UserTop 10

User Analysis

- > Personal Records & Report
- > Users' Traffic of each protocol
- > Individual Top10

Protocol	Total	No.	IP Address	User Name	Group/Department	To
FTP	11.38 MB	1	192.168.2.145			11.59 MB
HTTP	5.89 MB	2	192.168.3.162			5.36 MB
ICQ	0.00 MB	3	192.168.2.32			2.50 MB
MSN	0.00 MB	4	192.168.2.231			2.43 MB
P2P	0.00 MB	5	192.168.2.177			382.83 KB
POP3	0.00 MB	6	192.168.3.199			349.15 KB
SMTP	0.00 MB	7	192.168.2.204			322.21 KB
TELNET	0.00 MB	8	192.168.2.209			256.83 KB
WEBSMTP	0.00 MB	9	192.168.2.85			253.69 KB
YMSG	0.00 MB	10	192.168.2.248			240.28 KB

Service Analysis

FTP

Mail

HTTP

IM

Telnet

P2P

Webdown

Stock

Game

SIP

DNS Query

VPN

Statistics & Report

- > Each Service traffic graph
- > Hard Disk utilization graph
- > Generate offline PDF reports, send daily report email

working with

Vigor routers

VigorSwitch G2260

Network PCs

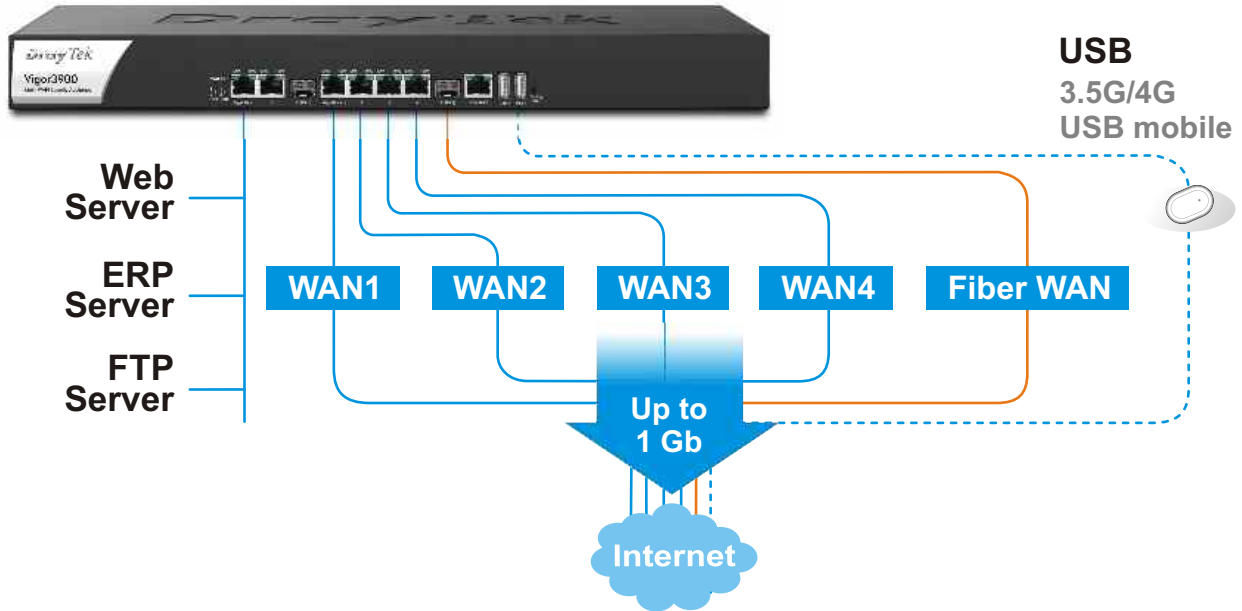
Running SmartMonitor

www.draytek.com E-mail: info@draytek.com Tel: +886-3-5972727 Fax: +886-3-5972121

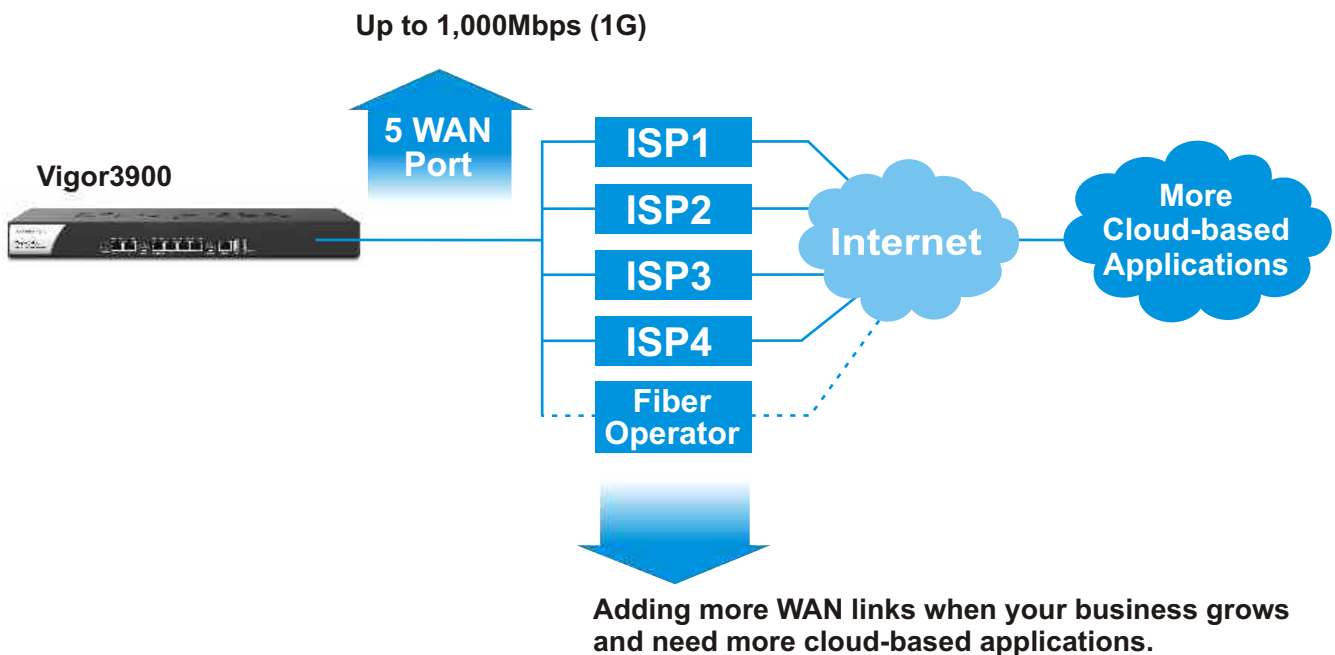
10

Mid-size Business Solutions

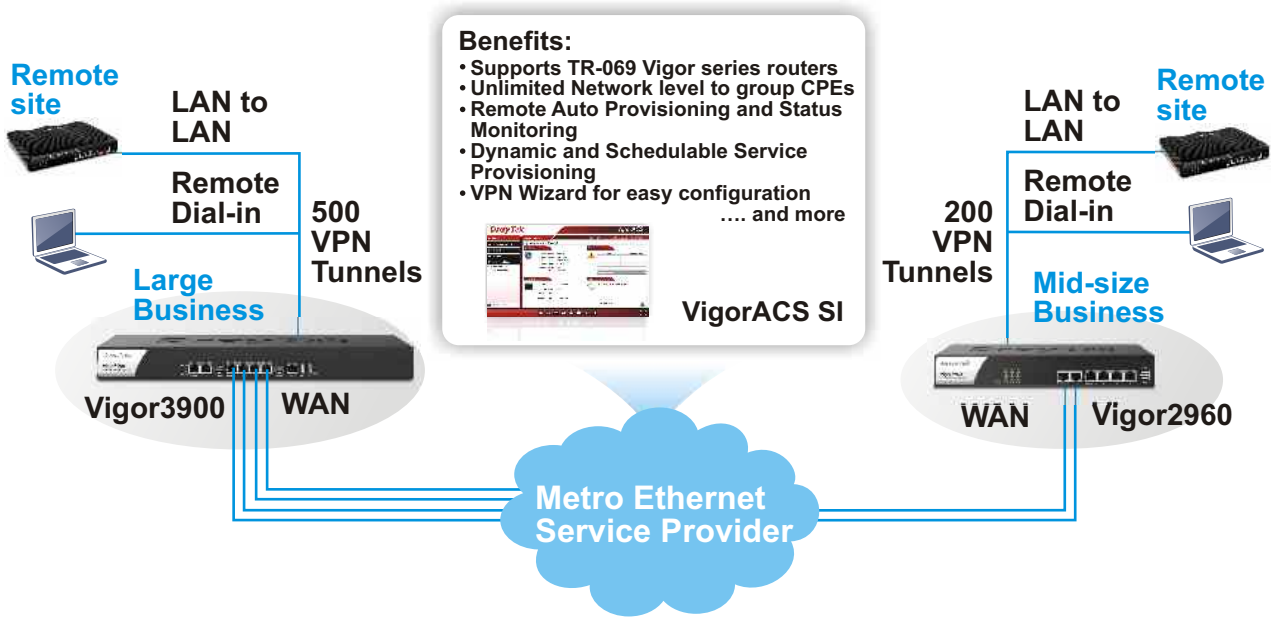
Business Continuity - **Stay Connected**
Multi-WAN Redundancy/Load-balancing



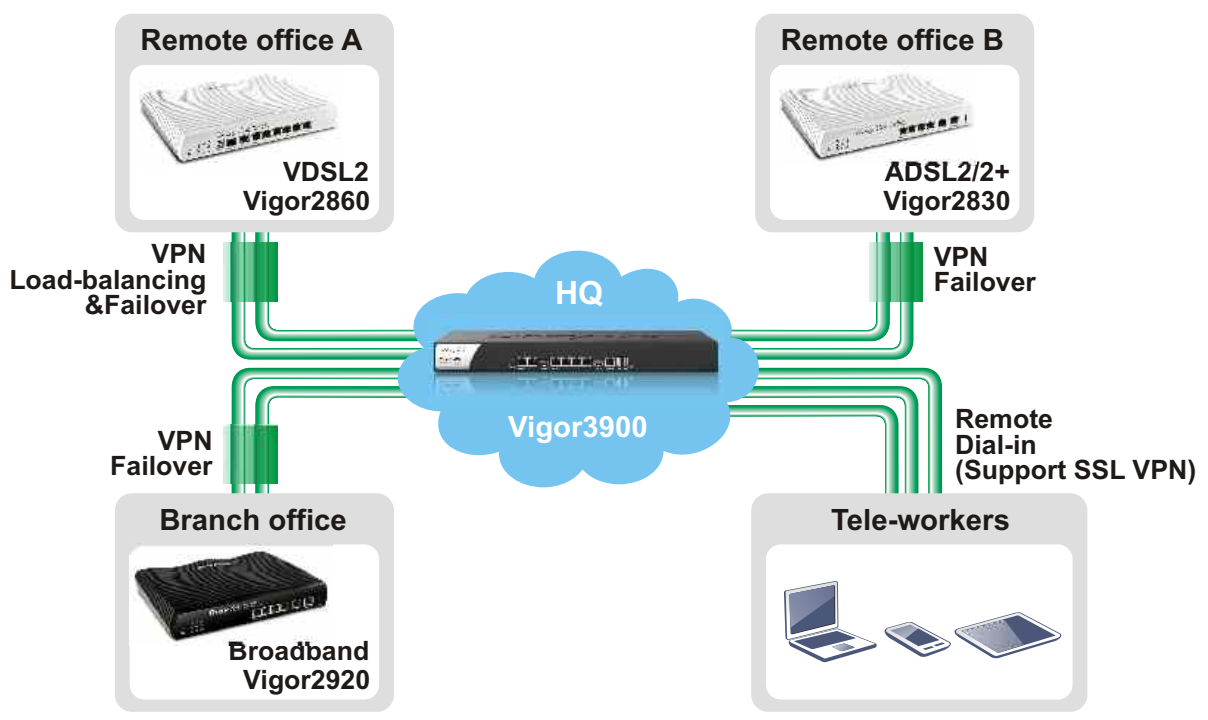
Business Continuity - **Business Growth**
Multi-WAN for the Bandwidth Scalability



Business Continuity - Business Growth Metro Ethernet Application



Business Continuity - Interoffice / Remote Access VPN with Load-balancing/Redundancy



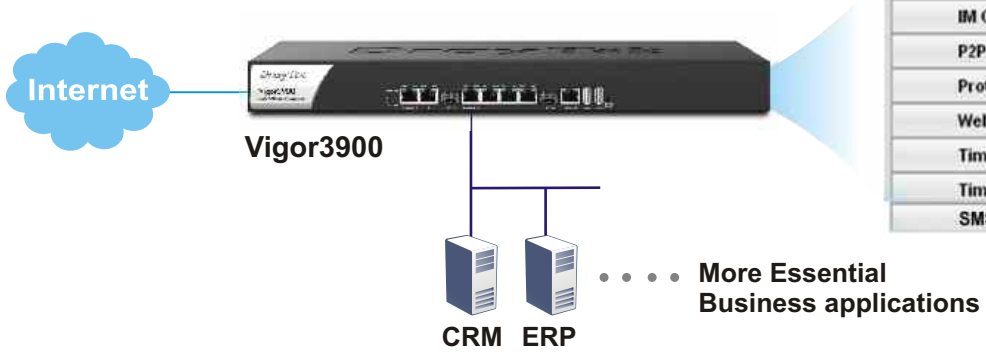
Business Continuity - Secured Network

Advanced Firewall for Secure & Efficient Workplace

Object-based Firewall & CSM (update signature update/ maintenance)

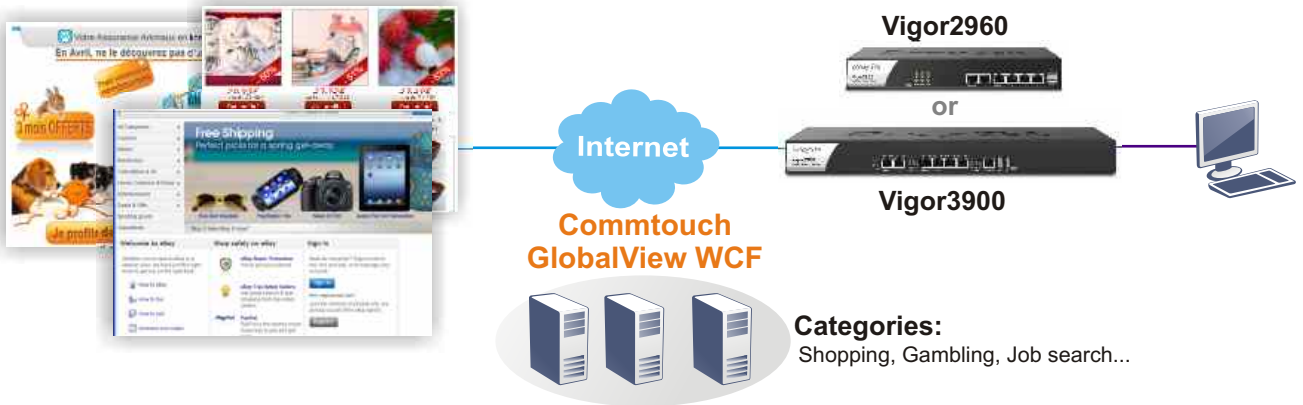
- **Prevent External Attacks**
 - DoS (Denial of Service) Attacks
 - IP-based Attacks
 - Access by unauthorized Remote Systems
- **Avoid Data Leakage**
- **Manage Employees' Network Activities**

Objects Setting
IP Object
IP Group
Service Type Object
Service Type Group
Keyword Object
Keyword Group
File Extension Object
IM Object
P2P Object
Protocol Object
Web Category Object
Time Object
Time Group
SMS/Mail Alert*

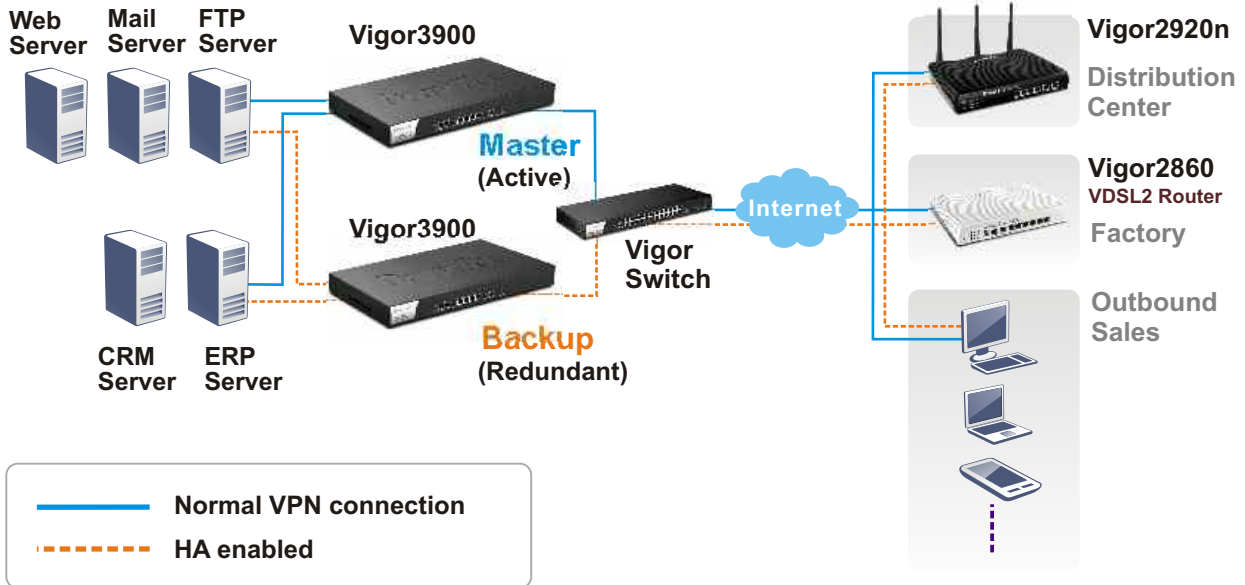


Commtouch GlobalView WCF

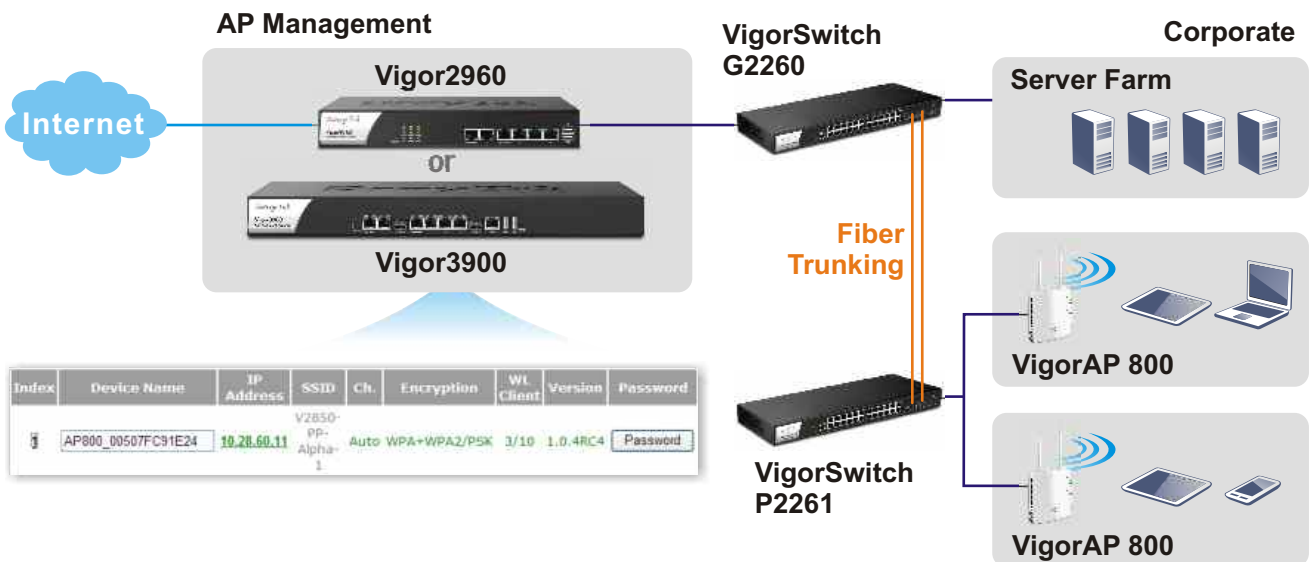
- **Productivity Enhancement**
- **Bandwidth Regulation**
- **HR Policy Compliance**
- **Preventing Web Threats**



Business Continuity - Disaster Recovery High Availability (HA)



BYOD

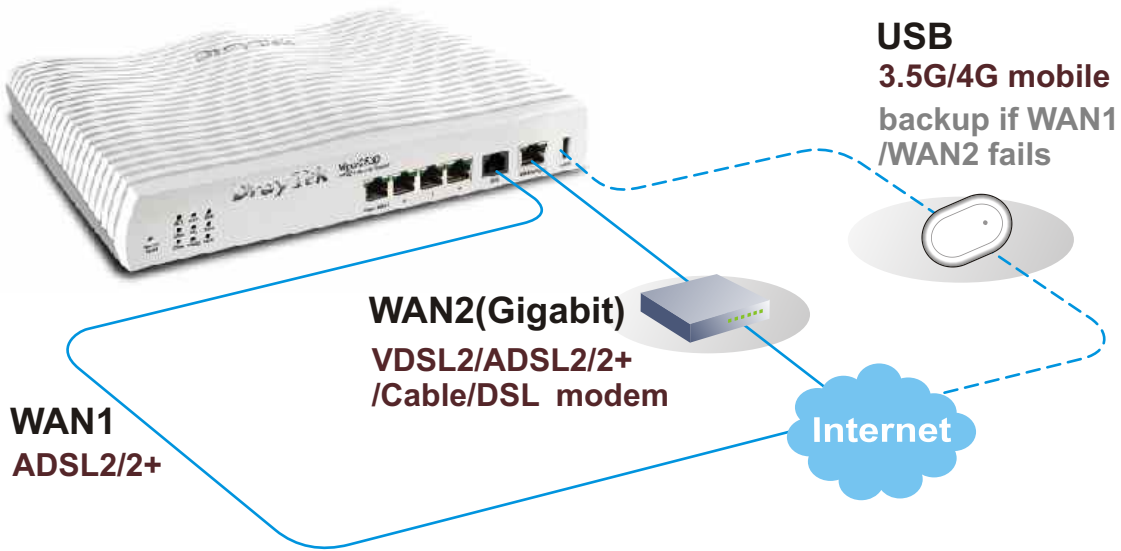


AP Management is available via the future firmware upgrade.

SOHO/Small Business Solutions

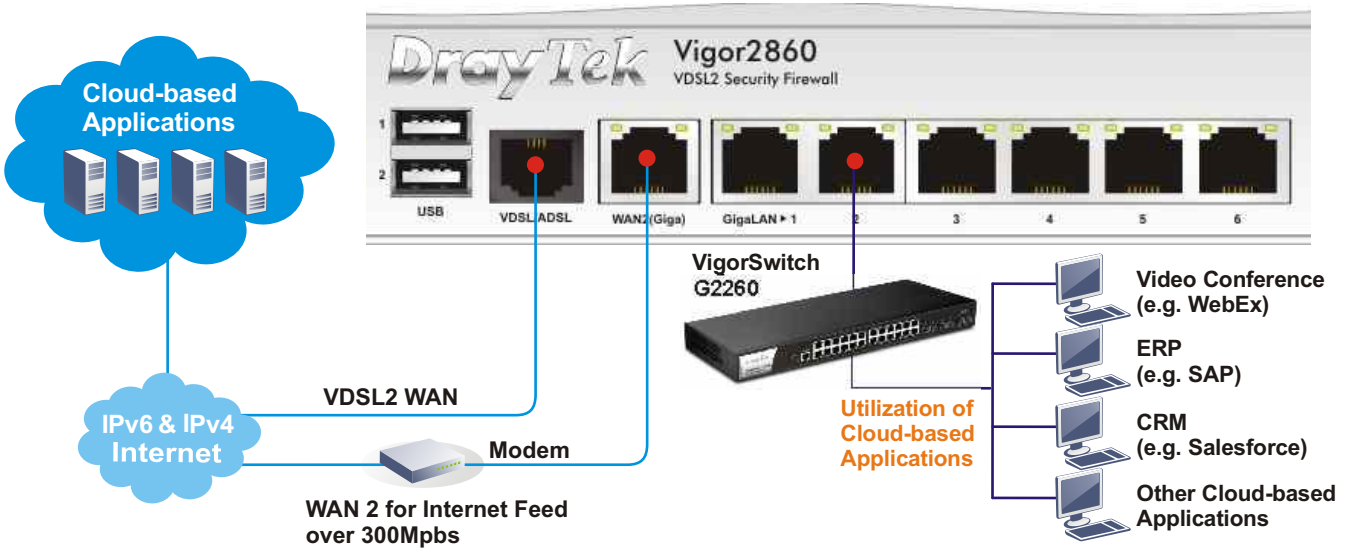
Reliable connectivity

Dual WAN and USB WAN (3.5G/4G LTE) ensure reliable connectivity.



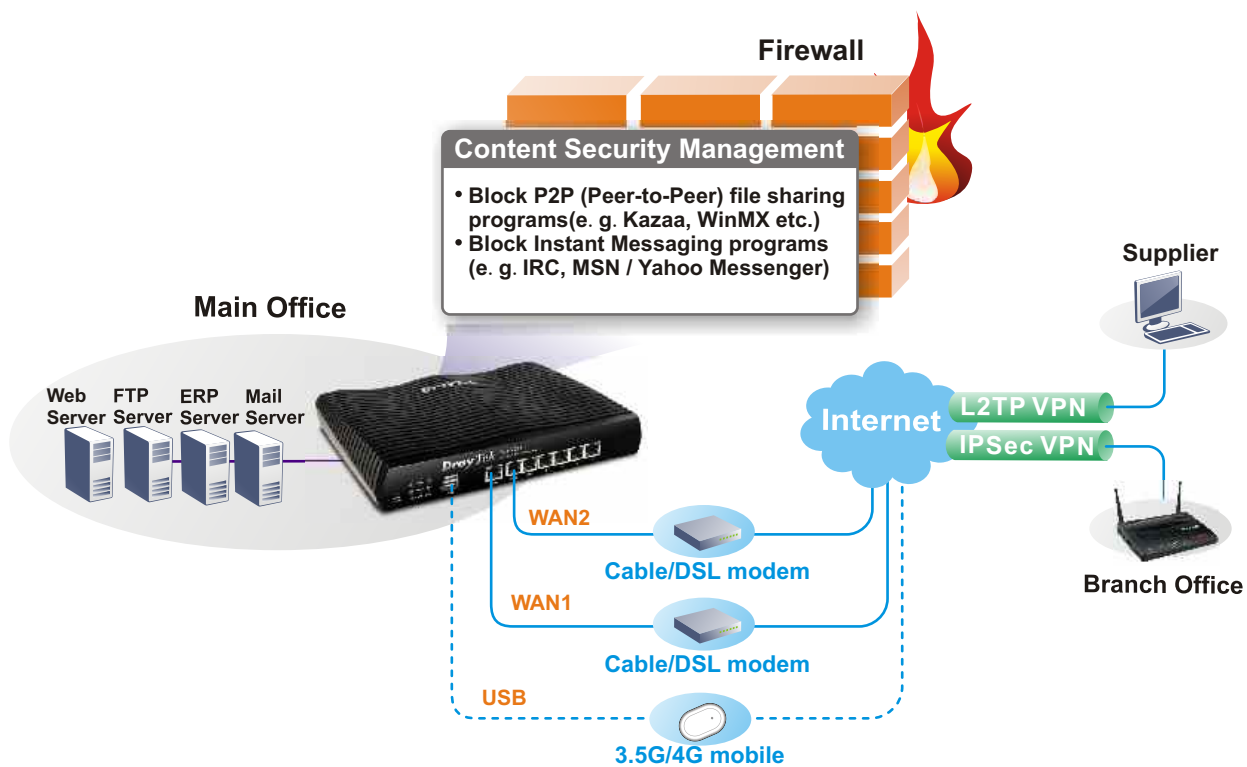
Utilization of cloud-based applications

Your thin client PCs can run those mission-critical business applications offered by the Cloud.

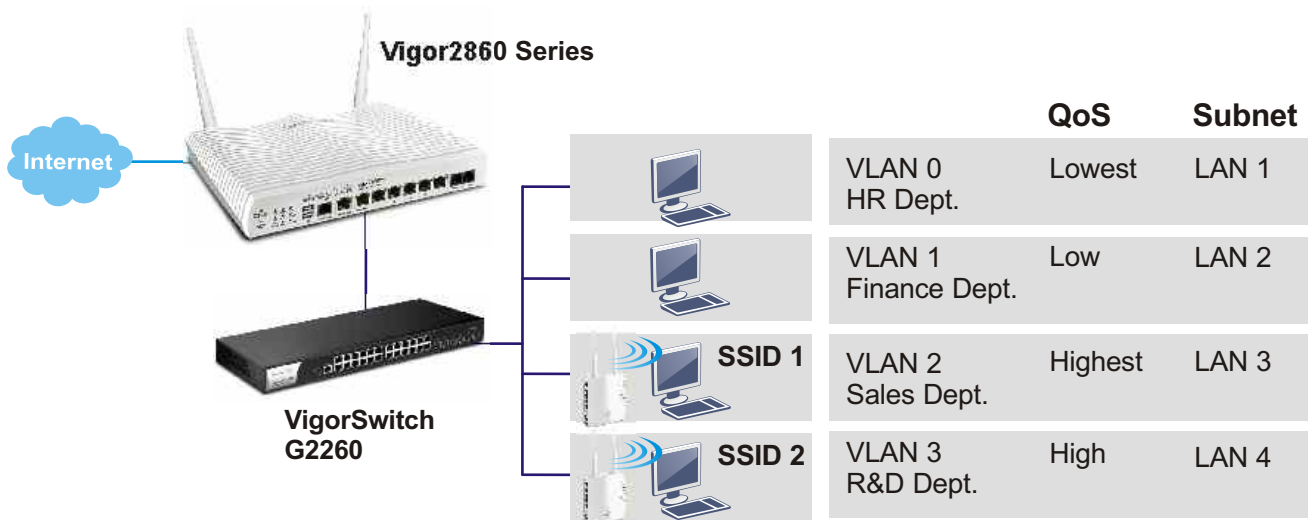


Robust Network Protection

CSM (Content Security Management) enables users to control and manage IM (Instant Messenger) and P2P (Peer-to-Peer) applications more efficiently.



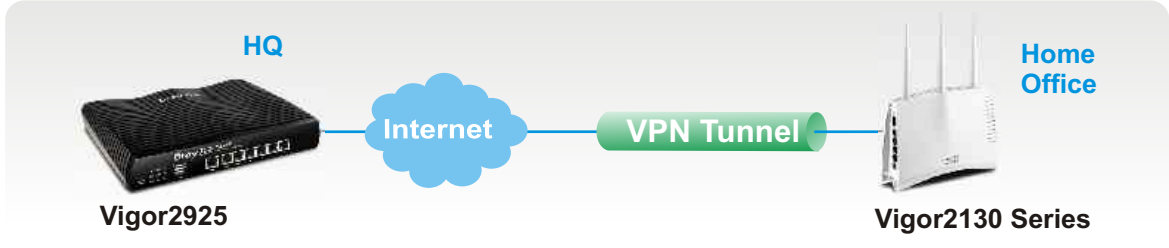
The multi-subnet feature can isolate different workgroup and manage the QoS and wireless access. Each subnet can be configured as IP object to ease the firewall settings.



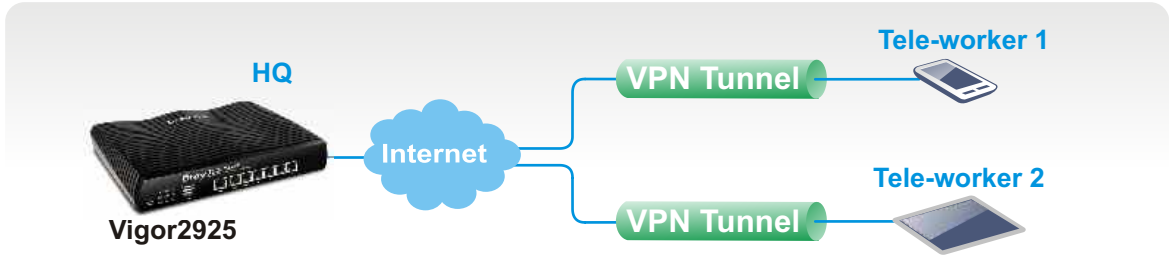
Multi-site Secure Communication

Vigor solutions support both LAN-to-LAN (site-to-site) and Remote dial-in (client-to-site) in PPTP/L2TP/IPsec that helps tele-worker access corporate data/application in anytime/anywhere.

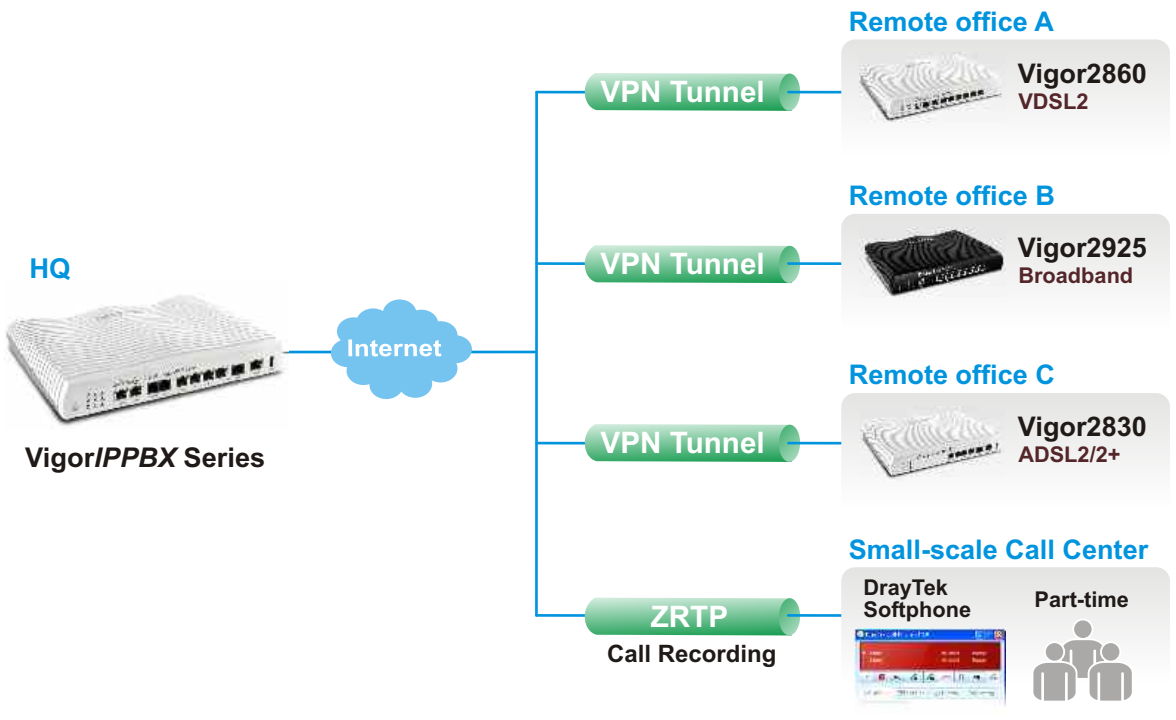
LAN to LAN



Remote dial-in

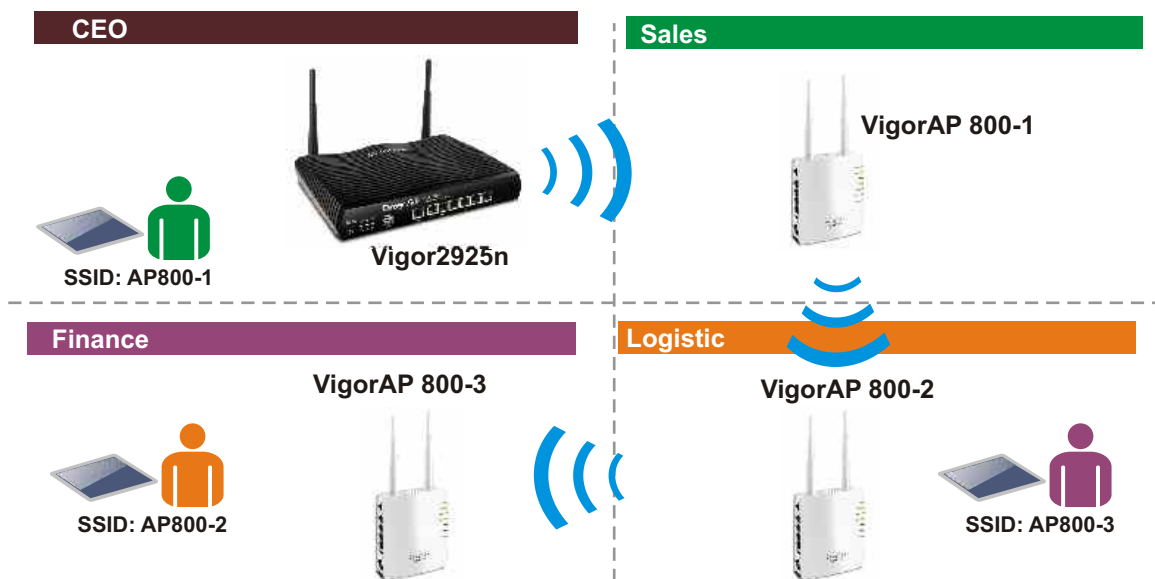


VoIP over VPN plus ZRTP protection



BYOD

Wi-Fi Security & Extensibility

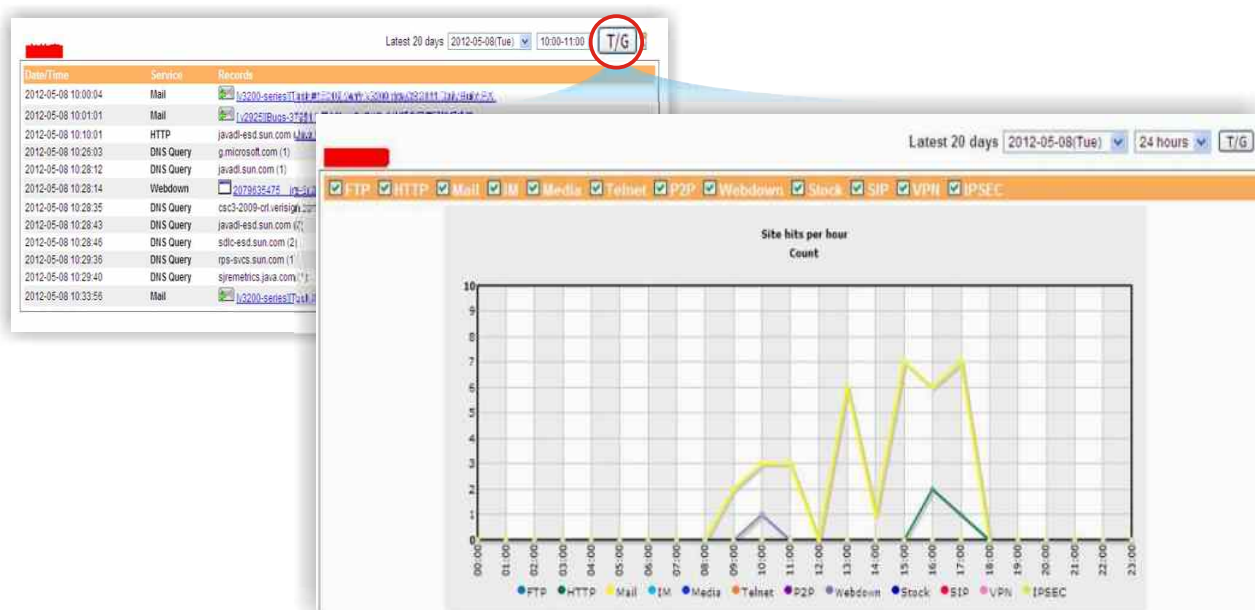


- WPA/ WPA2
- 64/128 bit WEP Encryption
- MAC Address Blocking
- Hidden SSID
- 802.1X Authentication

You can authorize person who can access wireless network in different departments by WDS/Universal Repeater.

Employee Productivity Optimization

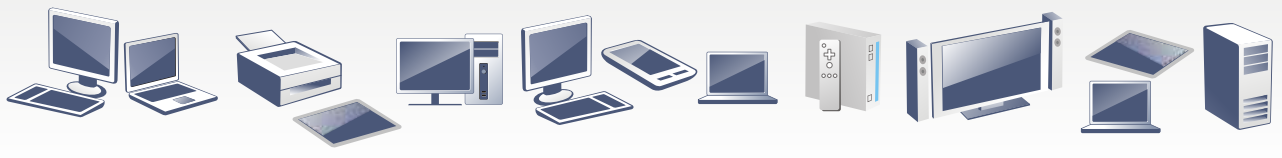
Get details of network logging record, e-mail record or IM chatting record, or file downloading, SIP call, VPN connection and more via DrayTek Smart Monitor Traffic Analyzer.



Get Ready for IPv6 Era

Need sufficient unique addresses to reach the full potential of every connected device

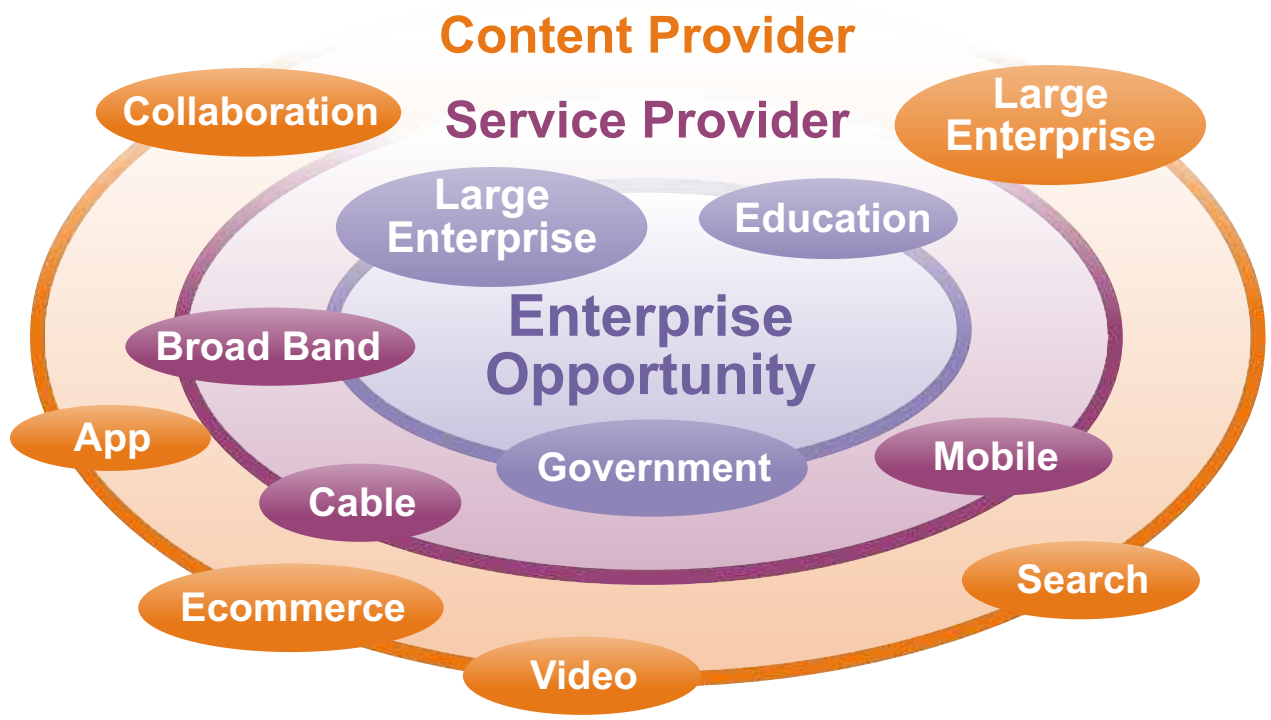
19 billion fixed and mobile-connected devices (2016 est.)



7.5 billion subscribers (2016 est.)



Supply and Demand



DrayTek IPv6 WAN Connection Type

Dual Stack

Static IPv6

PPP

Tunnel Mode

DHCPv6 Client

TSPC

AICCU

6to4

6rd

6in4 Static Tunnel

Dual-Stack Lite

DrayTek supports various IPv6 WAN connection types to meet different network infrastructures. Certainly, we'll add even more types based on customers' feedbacks.

New Applications

IPv6 characteristics make new applications easier



eg. Telematics

Supply and Demand



Mobile Workforce

IT Consumerization



IPv6 Generation



New Users for IT networks



Smart Grids



Smart Buildings



Video



M&A



Always on Connectivity



Manage Addresses

IP PBX Solutions



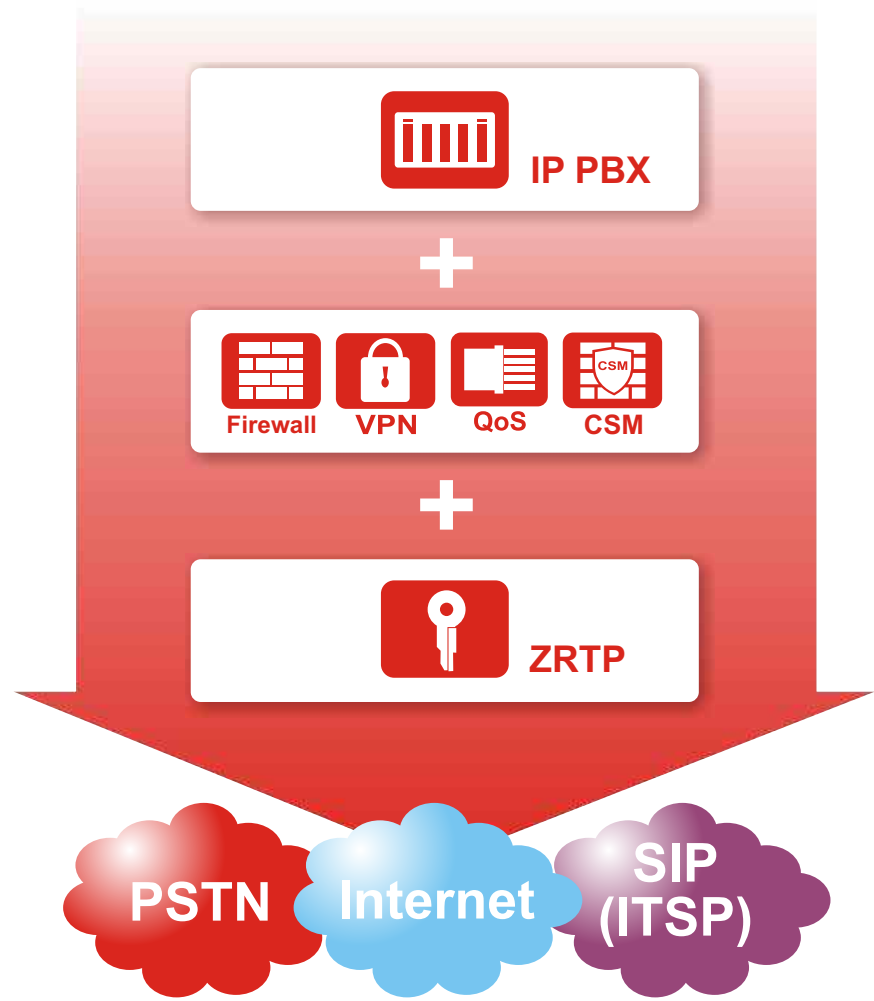
VigorIPPBX 2820

- 50 IP Extension
- Highly-integrated service ADSL2+ router with IPPBX functionalities



VigorIPPBX 3510

- 100 IP Extension
- Highly-integrated service firewall router with IPPBX functionalities



IP Phone

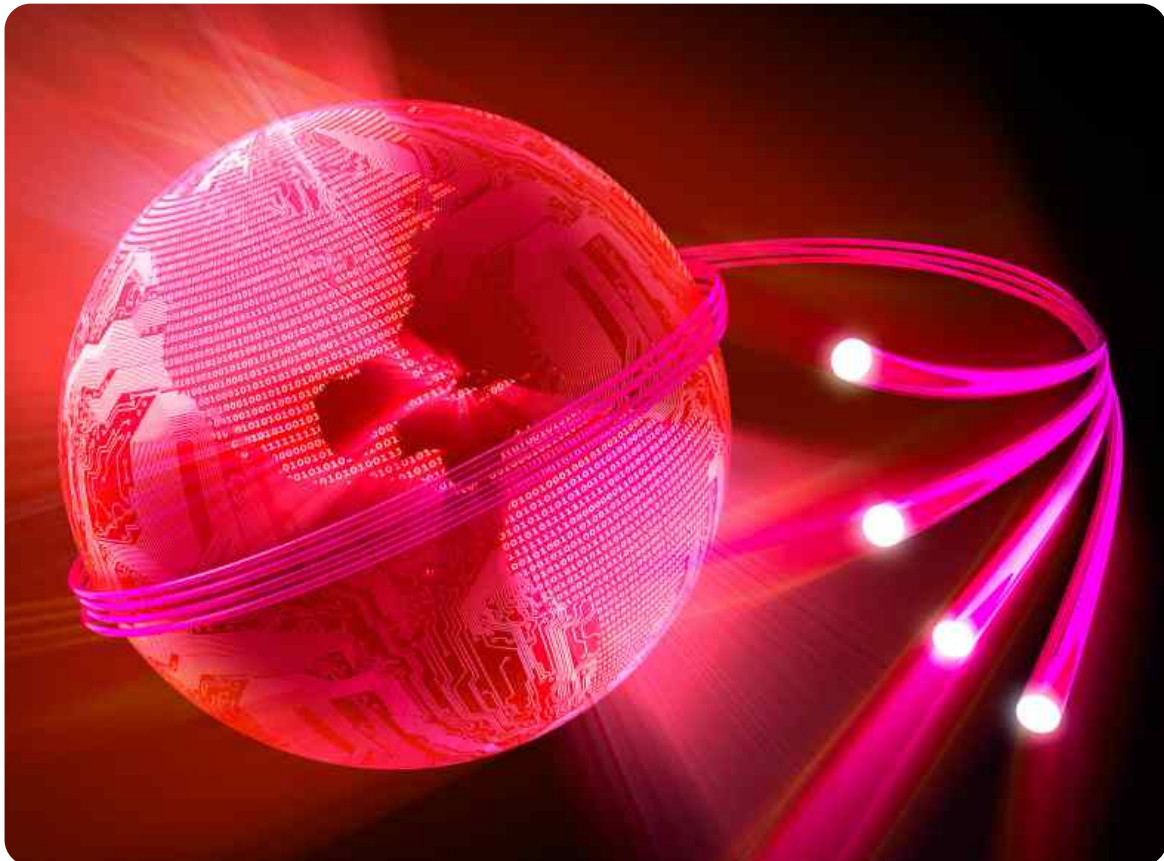


Soft Phone

Fiber Solutions

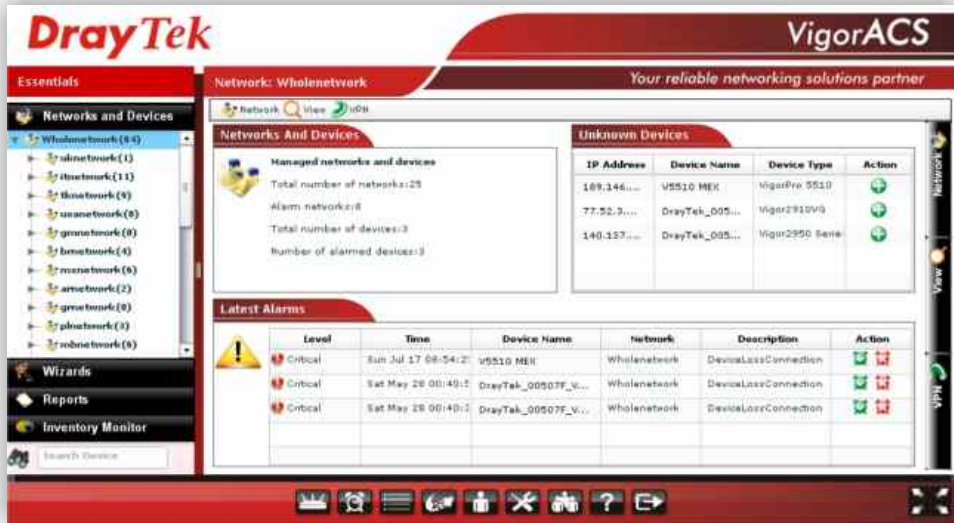
Model	Speed	Connector	Ethernet WAN	Wireless	VoIP	VPN	Firewall
Vigor3900	SFP	100/1G	4xGigabit Port	n/a	n/a	500	CSM
Vigor2960F	SFP	100/1G	1xGigabit Port	n/a	n/a	200	CSM
Vigor2920F Series	SFP	100	1xGigabit Port	11n	Yes	32	CSM
Vigor2130F Series	SFP	100/1G	n/a	11n	Yes	2	CSM
Vigor2110F Series	SFF	100	n/a	11n	Yes	2	CSM
Vigor1000 Series	SC or SFP*	100/1G	n/a	11n	Yes	2	CSM
VigorFly 210F Series	SFP	100	n/a	11n	Yes	1	CSM

The Vigor Fiber Router Series is only for project and please check with the local authorized resellers for availability.



VigorACS SI

Central Management



- Supports TR-069 Vigor series routers
- Unlimited Network level to group CPEs
- Remote Auto Provisioning and Status Monitoring
- Dynamic and Schedulable Service Provisioning
- VPN Wizard for easy configuration
- Daily Report and Performance for Review
- System Log System
- Real Time Alarm Management
- Topology Management
- Advance Firmware Management
- Security and User Group Management

Vigor3900

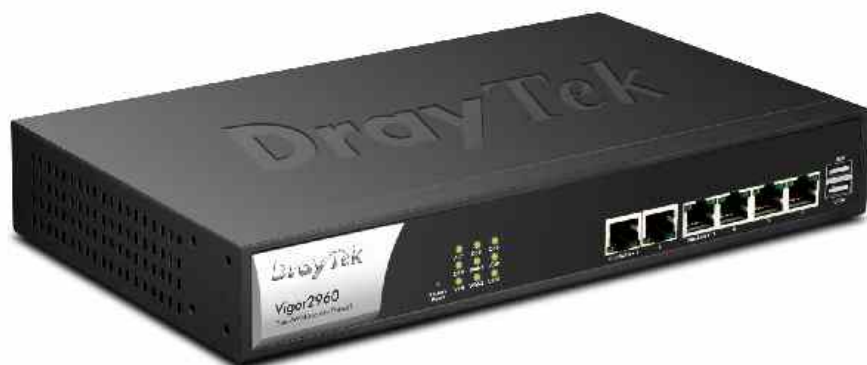
Multi-WAN Security



- Five Gigabit WAN (4 Ethernet & 1 SFP)
- Three Gigabit LAN ports (2 Ethernet & 1 SFP)
- WAN load-balancing & WAN Failover
- Up to 500 simultaneous IPsec/PPTP/L2TP VPN Tunnels
- VPN Trunking (VPN backup/load-balancing)
- Up to 50 WAN/LAN-side IP subnets
- QoS and Robust Firewall including Web Content Filtering
- IPv4 & IPv6 Dual Stack
- Working with Smart Monitor Traffic Analyzer (Up to 200 nodes)
- High Availability

Vigor2960

Dual-WAN Firewall



- Two Gigabit WAN (2 Ethernet ports)
- Four Gigabit LAN ports (4 Ethernet ports)
- Two USB ports for File System, USB printer and 3.5/4G USB mobile network
- WAN load-balancing & WAN Failover
- Up to 200 simultaneous IPsec/PPTP/L2TP VPN Tunnels
- VPN Trunking (VPN backup/load-balancing)
- Up to 20 WAN/LAN-side IP subnets
- QoS and Robust Firewall including Web Content Filtering
- IPv4 & IPv6 Dual Stack
- Working with Smart Monitor Traffic Analyzer (Up to 100 nodes)

Vigor3200 Series

Multi-WAN



- Four Gigabit Ethernet WAN
- One Gigabit LAN port, One DMZ port
- One USB port for File System, USB printer and 3.5/4G USB mobile network
- WAN load-balancing & WAN Failover
- Up to 64 simultaneous IPsec/PPTP/L2TP VPN Tunnels
- Up to 10 simultaneous SSL VPN tunnels
- Support VPN Backup and Load Balance (VPN Trunking) for WAN1 and WAN2
- Up to 4 WAN/LAN-side IP subnets
- Active Directory/LDAP Group Management for VPN remote dial-in authentication
- QoS and Robust Firewall including Web Content Filtering
- IPv4 & IPv6 Dual Stack
- Working with Smart Monitor Traffic Analyzer (Up to 100 nodes)

WLAN model: Vigor3200n (with 2.4GHz)

Vigor2920 Series

Dual-WAN



- Two Ethernet WAN ports (WAN 1: 10/100 Based-Tx, WAN 2: Gigabit Ethernet)
- Four Gigabit Ethernet LAN ports
- One USB port for File System, USB printer and 3.5/4G USB mobile network
- WAN load-balancing & WAN Failover
- Up to 32 simultaneous IPsec/PPTP/L2TP VPN Tunnels
- Support VPN Backup
- Up to 4 WAN/LAN-side IP subnets
- QoS and Robust Firewall including Web Content Filtering
- IPv4 & IPv6 Dual Stack
- Working with Smart Monitor Traffic Analyzer (Up to 30 nodes)

WLAN model: Vigor2920n (with 2.4GHz)
VoIP model with WLAN: Vigor2920Vn (with 2.4GHz)

Vigor2920F Series

Fiber Router



- One SFP port for 100 Mbps Fiber Feed, WAN 2: Gigabit Ethernet
- Four Gigabit Ethernet LAN ports
- One USB port for File System, USB printer and 3.5/4G USB mobile network
- WAN load-balancing & WAN Failover
- Up to 32 simultaneous IPsec/PPTP/L2TP VPN Tunnels
- Support VPN Backup
- Up to 4 WAN/LAN-side IP subnets
- QoS and Robust Firewall including Web Content Filtering
- IPv4 & IPv6 Dual Stack
- Working with Smart Monitor Traffic Analyzer (Up to 30 nodes)

WLAN model: Vigor2920Fn (with 2.4GHz)
VoIP model with WLAN: Vigor2920FVn (with 2.4GHz)

Vigor2910 Series

Dual-WAN



- Two 10/100 Based-Tx Ethernet WAN ports
- Four 10/100 Based-Tx Ethernet LAN ports
- One USB port for File System, USB printer and 3.5/4G USB mobile network
- WAN load-balancing & WAN Failover
- Up to 32 simultaneous IPsec/PPTP/L2TP VPN Tunnels
- QoS and Robust Firewall

Vigor2860 Series

VDSL2/ ADSL2/2+ highly integrated service router



- VDSL2/ADSL2+ port and One Ethernet WAN port (WAN 1: VDSL2/ADSL2+, WAN 2: Gigabit Ethernet)
- Six Gigabit Ethernet LAN ports
- Two USB ports for File System, USB printer and 3.5/4G USB mobile network
- WAN load-balancing & WAN Failover
- Up to 32 simultaneous IPsec/PPTP/L2TP VPN Tunnels
- VPN Trunking (VPN backup & VPN load-balancing)
- Up to 4 WAN/LAN-side IP subnets
- QoS and Robust Firewall including Web Content Filtering
- Implemented WLAN AP Management on n models
- IPv4 & IPv6 Dual Stack
- Working with Smart Monitor Traffic Analyzer (Up to 30 nodes)

WLAN model: Vigor2860n(2.4GHz), Vigor2860n plus (selectable 2.4/5 GHz)

VoIP model with WLAN: Vigor2860Vn (2.4GHz) and Vigor2860Vn plus (selectable 2.4/5 GHz)

Vigor2850 Series

VDSL2/ ADSL2/2+ highly integrated service router



- ADSL port and One Ethernet WAN port (WAN 1: 10/100 Based-Tx, WAN 2: Gigabit Ethernet)
- Four Gigabit Ethernet LAN ports and One USB port
- One USB port for File System, USB printer and 3.5/4G USB mobile network
- WAN load-balancing & WAN Failover
- Up to 32 simultaneous IPsec/PPTP/L2TP VPN Tunnels
- VPN Trunking (VPN backup & VPN load-balancing)
- Up to 4 WAN/LAN-side IP subnets
- QoS and Robust Firewall including Web Content Filtering
- IPv4 & IPv6 Dual Stack
- Working with Smart Monitor Traffic Analyzer (Up to 30 nodes)

WLAN model: Vigor2850n(selectable 2.4/5 GHz)

VoIP model with WLAN: Vigor2850Vn (selectable 2.4/5 GHz)

Vigor2830 Series

ADSL2/2+ highly integrated service router



- ADSL port and One Ethernet WAN port (WAN 1: 10/100 Based-Tx, WAN 2: Gigabit Ethernet)
- Four Gigabit Ethernet LAN ports
- One USB port for File System, USB printer and 3.5/4G USB mobile network
- WAN load-balancing & WAN Failover
- Up to 32 simultaneous IPsec/PPTP/L2TP VPN Tunnels
- Support VPN Backup
- Up to 4 WAN/LAN-side IP subnets
- QoS and Robust Firewall including Web Content Filtering
- IPv4 & IPv6 Dual Stack
- Working with Smart Monitor Traffic Analyzer (Up to 30 nodes)

WLAN model: Vigor2830n (with 2.4GHz) and Vigor2830n plus (selectable 2.4/5 GHz)

VoIP model with WLAN: Vigor2830Vn (with 2.4GHz) and Vigor2830Vn plus (selectable 2.4/5 GHz)

Vigor2820 Series

ADSL2/2+ highly integrated service router



- ADSL port and One Ethernet WAN port (WAN 1: ADSL port, WAN2: 10/100 Based-Tx)
- Three 10/100 Based-Tx Ethernet LAN ports and One 10/100/1000 Based-Tx Ethernet LAN port
- One USB port for File System, USB printer and 3.5/4G USB mobile network
- WAN load-balancing & WAN Failover
- Up to 32 simultaneous IPsec/PPTP/L2TP VPN Tunnels
- QoS and Robust Firewall including Web Content Filtering

WLAN model: Vigor2820n (with 2.4GHz)

VoIP model with WLAN: Vigor2820Vn (with 2.4GHz) and Vigor2820VSn (with ISDN S0 interface)

VigorIPPBX 2820 Series

ADSL2/2+ router



- ADSL port and One Ethernet WAN port (WAN 1: ADSL port, WAN2: 10/100 Based-Tx)
- Three 10/100 Based-Tx Ethernet LAN ports and One 10/100/1000 Based-Tx Ethernet LAN port
- One USB port for File System, USB printer and 3.5/4G USB mobile network
- WAN load-balancing & WAN Failover
- Up to 32 simultaneous IPsec/PPTP/L2TP VPN Tunnels
- QoS and Robust Firewall including Web Content Filtering
- Implemented IP PBX functionality
- Support 50-IP extensions
- Working with DrayTek Softphone

WLAN model: VigorIPPBX 2820n (with 2.4GHz)

Vigor2760 Series

VDSL2/ADSL2/2+ router



- VDSL2/ADSL2+ port
- Four Gigabit Ethernet LAN ports
- Two USB ports for File System, USB printer and 3.5/4G USB mobile network
- Two simultaneous IPsec/PPTP/L2TP VPN Tunnels
- QoS and Robust Firewall including Web Content Filtering
- IPv4 & IPv6 Dual Stack

WLAN model: Vigor2760n(2.4GHz), Vigor2760n plus (selectable 2.4/5 GHz)

VoIP model with WLAN: Vigor2760Vn (2.4GHz) and Vigor2760Vn plus (selectable 2.4/5 GHz)

Vigor2750 Series

VDSL2/ADSL2/2+ router



- One VDSL2/ADSL2+ port
- Four Gigabit Ethernet LAN ports
- Two USB ports for File System, USB printer and 3.5/4G USB mobile network
- Two simultaneous IPsec/PPTP/L2TP VPN Tunnels
- QoS and Robust Firewall including Web Content Filtering
- IPv4 & IPv6 Dual Stack

WLAN model: Vigor2750n(2.4GHz)

VoIP model with WLAN: Vigor2750Vn (2.4GHz)

Vigor2710 Series

ADSL2/2+ router



- One ADSL2/2+ port
- Four 10/100 Based-Tx Ethernet LAN ports and One USB port
- One USB port for File System, USB printer and 3.5/4G USB mobile network
- Two simultaneous IPsec/PPTP/L2TP VPN Tunnels
- QoS and Robust Firewall including Web Content Filtering
- IPv4 & IPv6 Dual Stack

WLAN model: Vigor2710n(2.4GHz)

VoIP model with WLAN: Vigor2710Vn (2.4GHz) and Vigor2710VDn (2.4GHz)

Vigor2710e/ne

ADSL2/2+ router



- One ADSL2/2+ port
- Four 10/100 Based-Tx Ethernet LAN ports
- QoS and Robust Firewall including Web Content Filtering
- Equipped with 802.11n WLAN (2.4GHz) on Vigor2710e

Vigor130

VDSL2/ADSL2/2+ router



- One VDSL2/ADSL2+ port
- One 10/100/1000 Based-Tx Ethernet LAN port
- QoS and Robust Firewall

Vigor120

ADSL2/2+ router



- One ADSL2+ port
- One 10/100 Based-Tx Ethernet LAN port
- QoS and Robust Firewall

Vigor2130 Series

Gigabit broadband router



- One Gigabit Ethernet WAN port
- Four Gigabit Ethernet LAN ports
- Two USB ports for File System, USB printer and 3.5/4G USB mobile network
- Two simultaneous IPsec/PPTP/L2TP VPN Tunnels
- QoS and Robust Firewall including Web Content Filtering
- IPv4 & IPv6 Dual Stack

WLAN model: Vigor2130n(2.4GHz)

VoIP model with WLAN: Vigor2130Vn (2.4GHz)

Vigor2110 Series

Broadband router



- One 10/100Based-Tx WAN port
- Four 10/100 Based-Tx Ethernet LAN ports
- One USB port for File System, USB printer and 3.5/4G USB mobile network
- Two simultaneous IPsec/PPTP/L2TP VPN Tunnels
- QoS and Robust Firewall including Web Content Filtering
- IPv4 & IPv6 Dual Stack

WLAN model: Vigor2110n(2.4GHz)

VoIP model with WLAN: Vigor2110Vn (2.4GHz)

VigorFly 210

Broadband router



- One 10/100 Based-Tx WAN port
- One USB port for 3.5/4G USB mobile
- Four 10/100 Based-Tx Ethernet LAN ports
- QoS and Robust Firewall including Web Content Filtering
- Equipped with 802.11n WLAN (2.4GHz)

Vigor2130F Series

Fiber router



- One SFP port for 100/1000 Mbps Fiber Feed
- Four Gigabit Ethernet LAN ports
- Two USB ports for File System, USB printer and 3.5/4G USB mobile network
- Two simultaneous IPsec/PPTP/L2TP VPN Tunnels
- QoS and Robust Firewall including Web Content Filtering
- IPv4 & IPv6 Dual Stack

WLAN model: Vigor2130Fn(2.4GHz)

VoIP model with WLAN: Vigor2130FVn (2.4GHz)

Vigor2110F Series

Fiber router



- One SFP port for 100 Mbps Fiber Feed
- Four 10/100 Based-Tx Ethernet LAN ports
- One USB port for File System, USB printer and 3.5/4G USB mobile network
- Two simultaneous IPsec/PPTP/L2TP VPN Tunnels
- QoS and Robust Firewall including Web Content Filtering
- IPv4 & IPv6 Dual Stack

WLAN model: Vigor2110Fn(2.4GHz)

VoIP model with WLAN: Vigor2110FVn (2.4GHz)

VigorFly 210F

Fiber router



- One SFP port for 100 Mbps Fiber Feed
- One USB port for 3.5/4G USB mobile
- Four 10/100 Based-Tx Ethernet LAN ports
- QoS and Robust Firewall including Web Content Filtering
- Equipped with 802.11n WLAN (2.4GHz)

Vigor1000 Series

Fiber router



- One Fiber port for 100/1000 Mbps Fiber Feed (The said fiber port can be SC interface or SFP interface)
- Four Gigabit Ethernet LAN ports
- Two USB ports for File System, USB printer and 3.5/4G USB mobile network
- Two simultaneous IPsec/PPTP/L2TP VPN Tunnels
- QoS and Robust Firewall including Web Content Filtering
- IPv4 & IPv6 Dual Stack

WLAN model: Vigor1000n(2.4GHz)

VoIP model with WLAN: Vigor1000Vn (2.4GHz)

VigorIPPBX 3510

Broadband router with IP PBX



- One 10/100 Based-Tx Ethernet port
- Four 10/100 Based-Tx Ethernet LAN ports
- One USB port for File System, USB printer and 3.5/4G USB mobile network
- Up to 32 simultaneous IPsec/PPTP/L2TP VPN Tunnels
- QoS and Robust Firewall including Web Content Filtering
- Implemented IP PBX functionality
- Support 100 IP extensions
- Working with DrayTek Softphone

VigorAP 900

802.11n Access Point



- Support 802.11n WLAN concurrent 2.4/5 GHz
- 5 x Giga Port
- 1 x PoE with Giga Ethernet
- 1 x USB 2.0 Port
- 4 x SSID with Tag-based VLAN
- WDS
- WMM
- Support AP/Station/WDS/Universal Repeater Mode
- Support WEP 64/128 bit, WPA/WPA2 and RADIUS Encryption
- Internal/External RADIUS Authentication
- Dual DHCP Server for Wired/Wireless Service
- Wireless Client Limitation
- WLAN Bandwidth Limitation (per SSID)
- Support USB Sharing (Storage & Printer)
- Support Vigor AP Management
- Compliance with VigorACS SI

VigorAP 800

802.11n Access Point



- PoE Wi-Fi (802.11n) Access Point
- WMM (Wi-Fi Multimedia)
- 2.4 GHz/5 GHz
(with DrayTek N65 5GHz USB dongle)
- Four SSID & Two VLAN Groups
- Built-In Radius Server
- WDS (Wireless Distribution System)

VigorAP 700

802.11n Access Point



- Wi-Fi Access Point
- Four SSID
- Built-In Radius Server

Wireless Accessories

Vigor N65 5GHz 802.11n USB Adapter



- Compatible with 802.11a/b/g/n standard
- Up to 300Mbps

Antenna Series



Model	ANT-1107	ANT-2309	ANT-2510
Description	2.4G Omni-Directional Antenna	2.4G Directional Corner Antenna	2.4G Directional Patch Antenna
Environment	Indoor	Indoor	Indoor / Outdoor
Frequency Range	2.4~2.5 GHz	2.4 ~2.4835 GHz	2.4~2.4835 GHz
Gain	7dBi	9 dBi	10 dBi
VSWR	≤2.0	≤2.0	≤2.0
Polarization	Vertical	Vertical	Vertical
HPBW/Horizontal	360°	64.3°	56.9°
HPBW/Vertical	22.3°	64.3°	56.9°
Power Handling	2W	2W	2W
Impedance	50Ω	50Ω	50Ω
Connector	Reverse SMA	Reverse SMA	Reverse SMA
Extension Cable	Detachable stand with 1M cable	1M	1M
Dimension (LxWxH) mm	ø 14.5 x 265	125 x 100.5 x 50.2	120.6 x 120.6 x 27

DrayTek Rack-mount Plate

The metal rack-mount plate is designed for sustaining the device of Vigor2820/Vigor2830/Vigor2850/Vigor2860/Vigor2920/Vigor3200 series inside the 19-inch cabinet.



VigorSwitch G2260

Enterprise-level Gigabit Ethernet Switch

- Twenty 10/100/1000Base-Tx ports (20 Gigabit Ethernet ports) for LAN
- Fiber connectivity for the backbone: 2 SFP ports and 4 Combo UTP/SFP ports
- Advanced security for remote access, IP Source Guard, 802.1x access control, etc
- Access Control List (ACL) to prevent unauthorized access
- VLAN features provide both security and performance
- Dedicated Voice VLAN to prioritize voice traffic automatically
- Advanced QoS for application traffic prioritization
- Preset options for IP Phone, IP Camera, Wireless devices, etc
- UPnP for simple connectivity
- Power saving by 802.3az Energy Efficient Ethernet
- sFlow sampling protocol monitors network traffic without interrupting data flow
- IPv6 and IPv4 conformity for the next generation network



VigorSwitch P2261

24+2 Port PoE Managed Switch

- Twenty 10/100/1000Base-Tx ports (20 Gigabit Ethernet ports) for LAN
- Fiber connectivity for the backbone: 2 SFP ports and 4 Combo UTP/SFP ports
- Advanced security for remote access, IP Source Guard, 802.1x access control
- Access Control List (ACL) to prevent unauthorized access
- VLAN features provide both security and performance
- Dedicated Voice VLAN to prioritize voice traffic automatically
- Advanced QoS for application traffic prioritization
- Preset options for IP Phone, IP Camera, Wireless devices
- UPnP for simple connectivity
- Power saving by 802.3az Energy Efficient Ethernet
- sFlow sampling protocol monitors network traffic without interrupting data flow
- IPv6 and IPv4 conformity for the next generation network

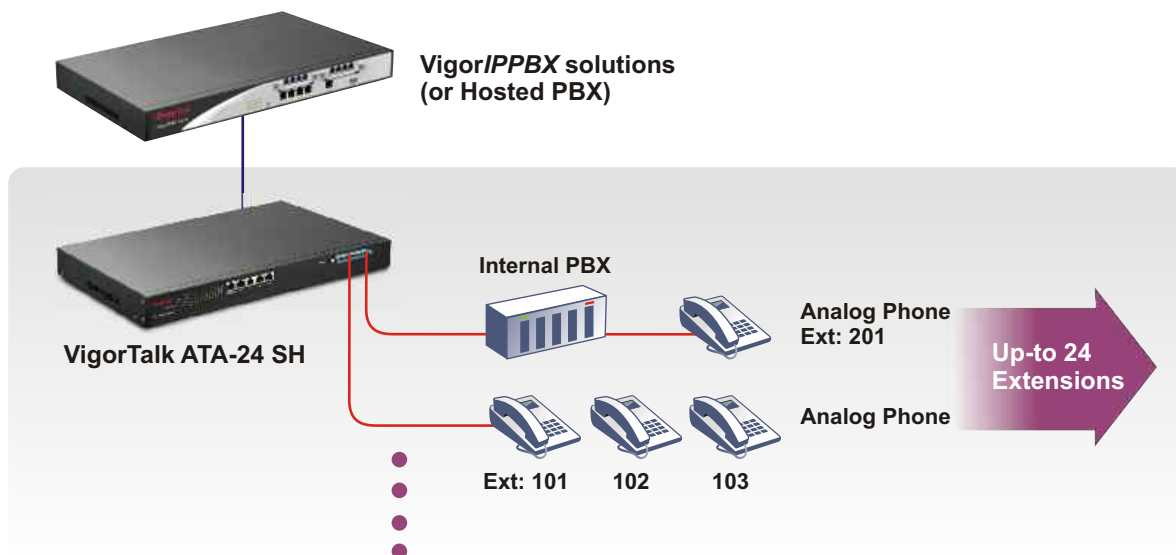


VigorTalk ATA -24 SH (Short Haul)

24 Port Analogue Telephone Adapter



- 24 x ATA with Champ Connector for easy wiring
- Denial-of-Service (DoS) for securing against intruders/attackers
- Bandwidth-guarantee and high stability for VoIP
- Easy installation, configuration, and management through user-friendly WEB interface and VigorCMS
- EMS management (VigorCMS) for configuration management, topology, management, security management, fault management and backup/restore storage management
- High availability provides a non-stop and reliability network access devices
- Short haul solution can reach 1 Km(3.3Kft)
- High quality VoIP calls and supplementary service



Short haul solution can reach 1Km (3.3Kft).

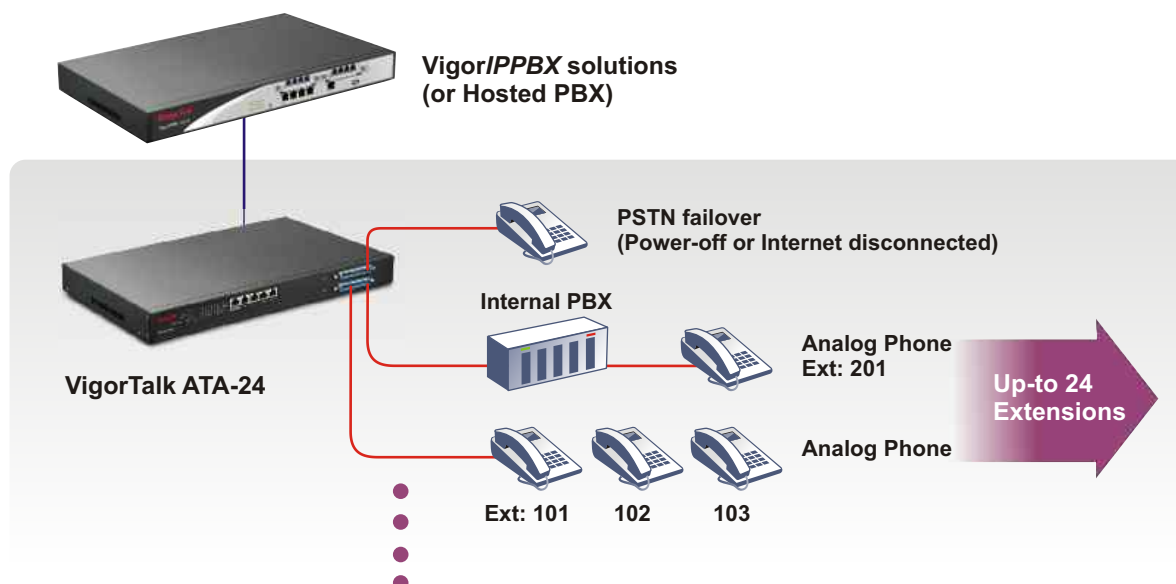
VigorATA 24 SH also supports the stackable application to add more extensions if needed.

VigorTalk ATA -24 (Long Haul)

24 Port Analogue Telephone Adapter



- 24 x ATA with Champ Connector for easy wiring
- Denial-of-Service (DoS) for securing against intruders/attackers
- Bandwidth-guarantee and high stability for VoIP
- Easy installation configuration, and management through user-friendly WEB interface and VigorCMS
- EMS management (VigorCMS) for configuration management, topology management, security management, fault management and backup / restore storage management
- High availability provides a non-stop and reliability network access devices
- Long Haul solution can reach 5.5Km (18Kft)
- Support 12K/16K Hz tone metering
- Support PSTN failover
- High quality VoIP calls and supplementary service



Long haul solution can reach 5.5Km (18Kft).

VigorATA 24 also supports the stackable application to add more extensions if needed.

DrayTek

Your reliable networking solutions partner



www.draytek.com

Tel: +886-3-5972727 Fax: +886-3-5972121 E-mail: info@draytek.com

Trademarks and brand names are the properties of their respective owners.
The scope of delivery and other details are subject to change without prior notice.
Copyrights © DrayTek Corp. All right reserved.